

LIMBO – A Tool for Modeling Variations in Open Workload Arrivals

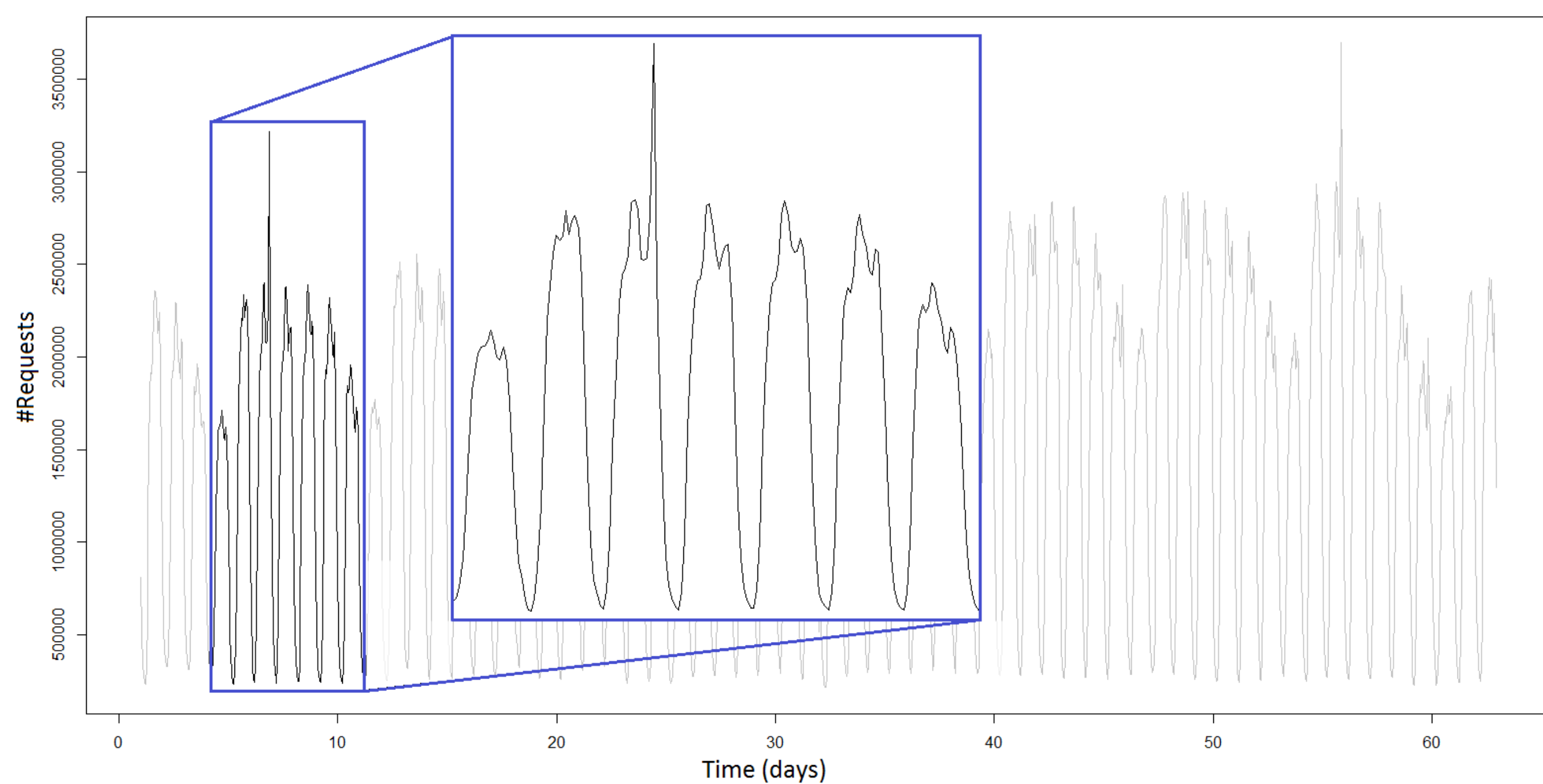
Jóakim v. Kistowski, Nikolas Herbst, Samuel Kounev



<http://descartes.tools/limbo>

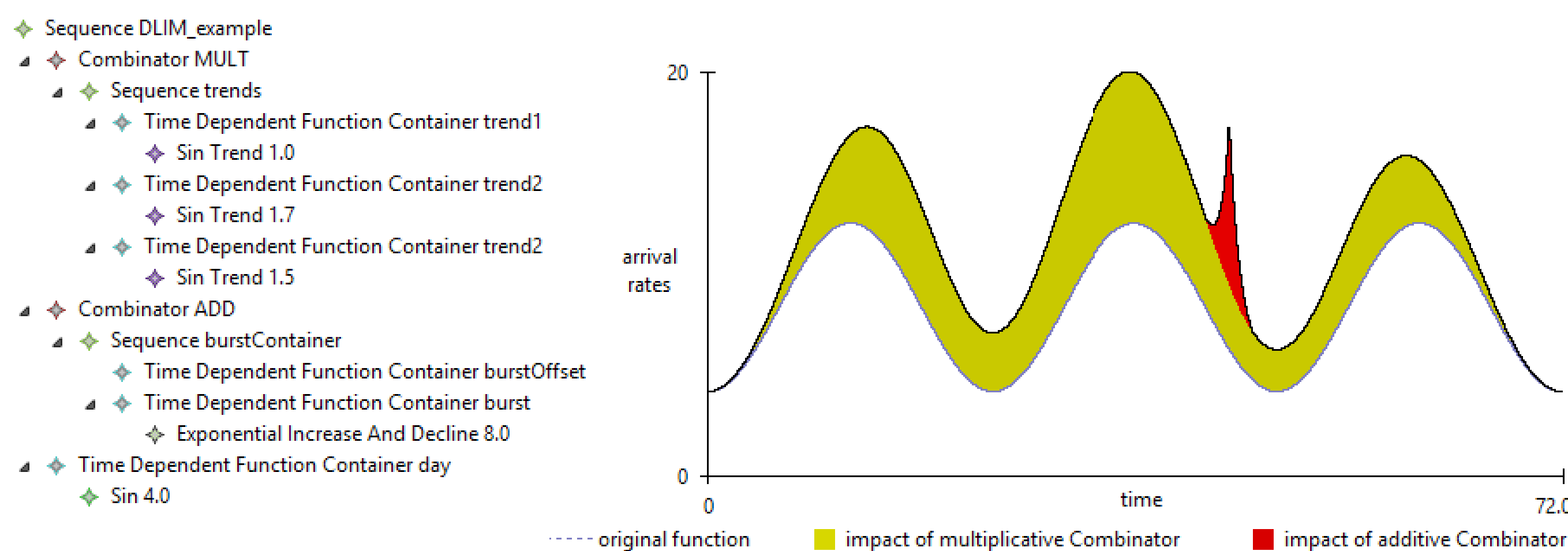
Motivation

- Capture and Describe Load Intensity Profiles
- Create Custom Load Intensities for Open-Workload based Benchmarking



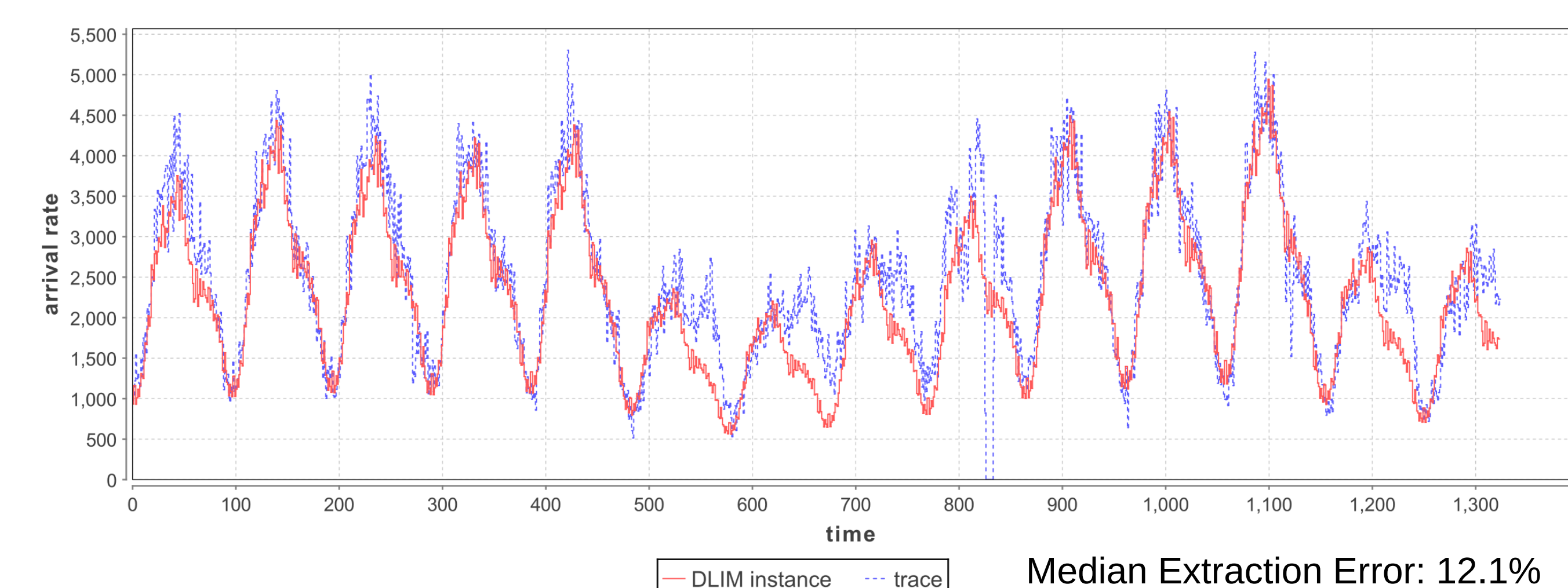
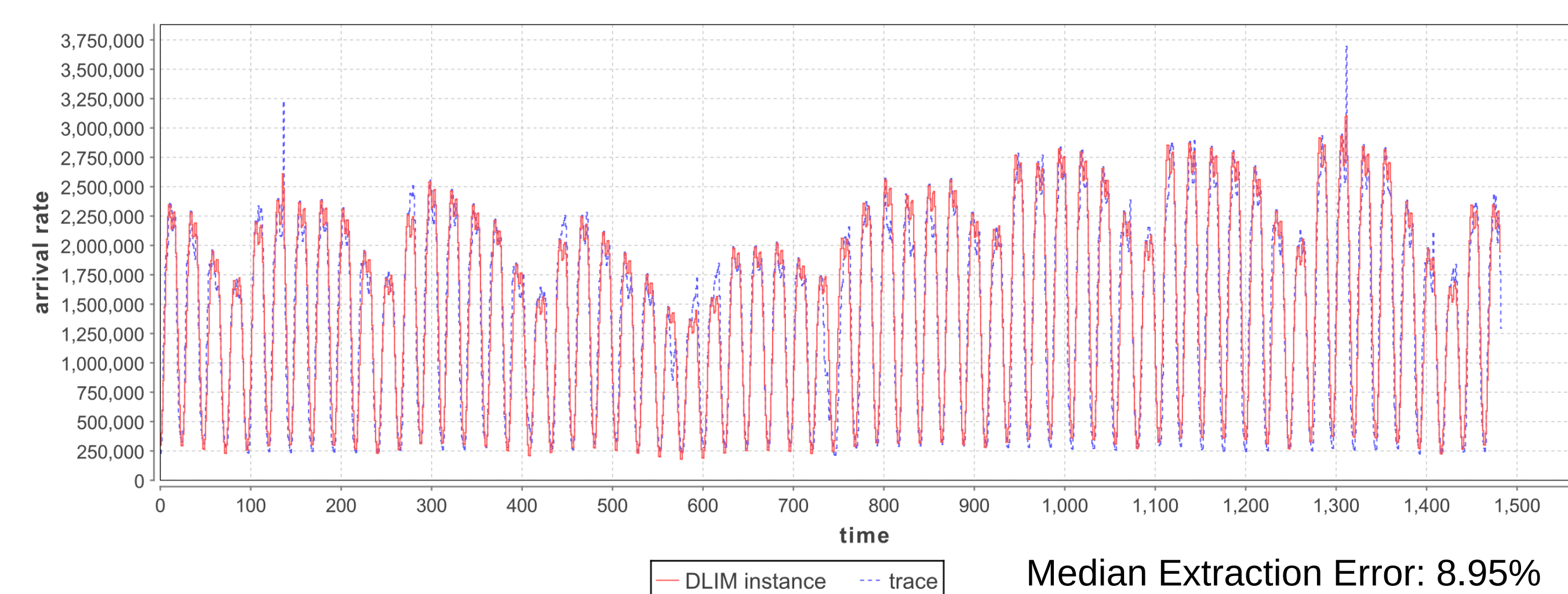
Descartes Load Intensity Model

- Use piece-wise mathematical functions for accurate Load Intensity Description

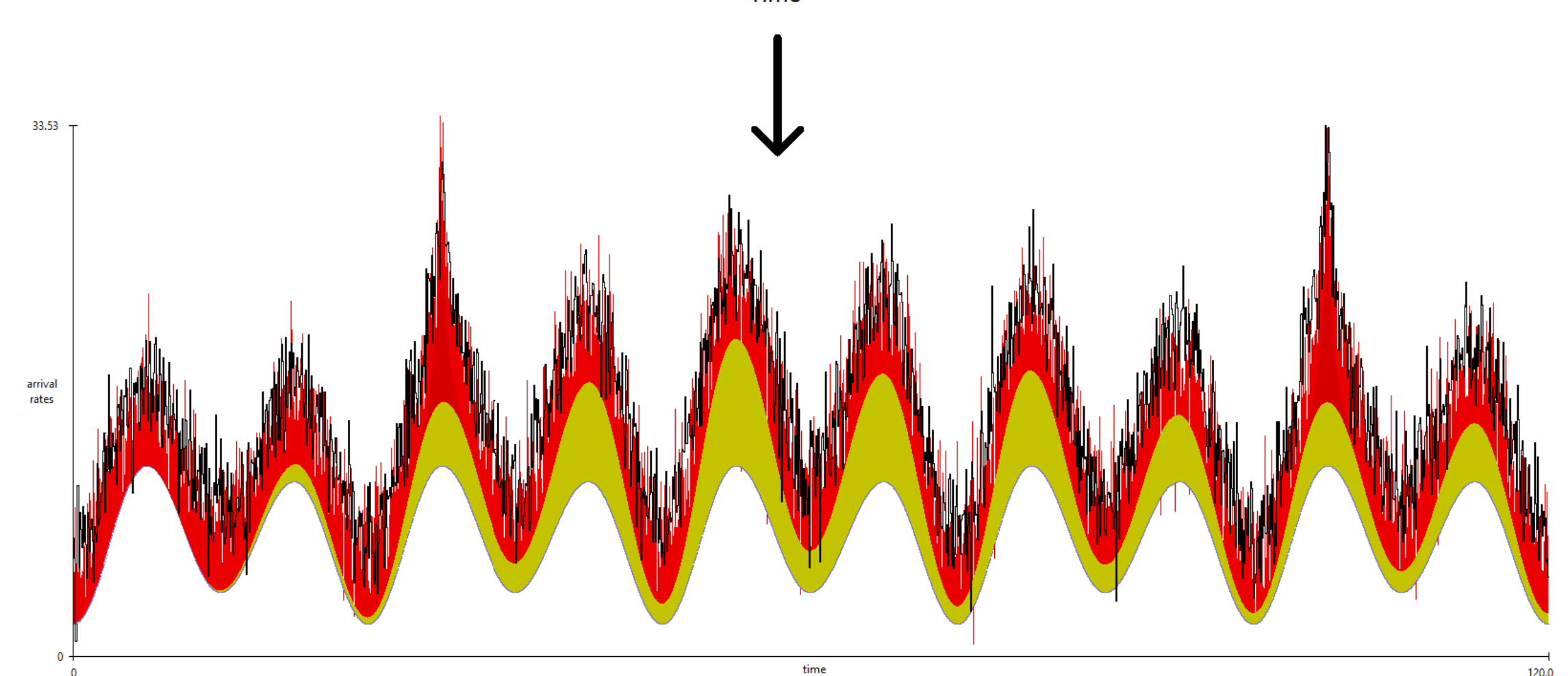
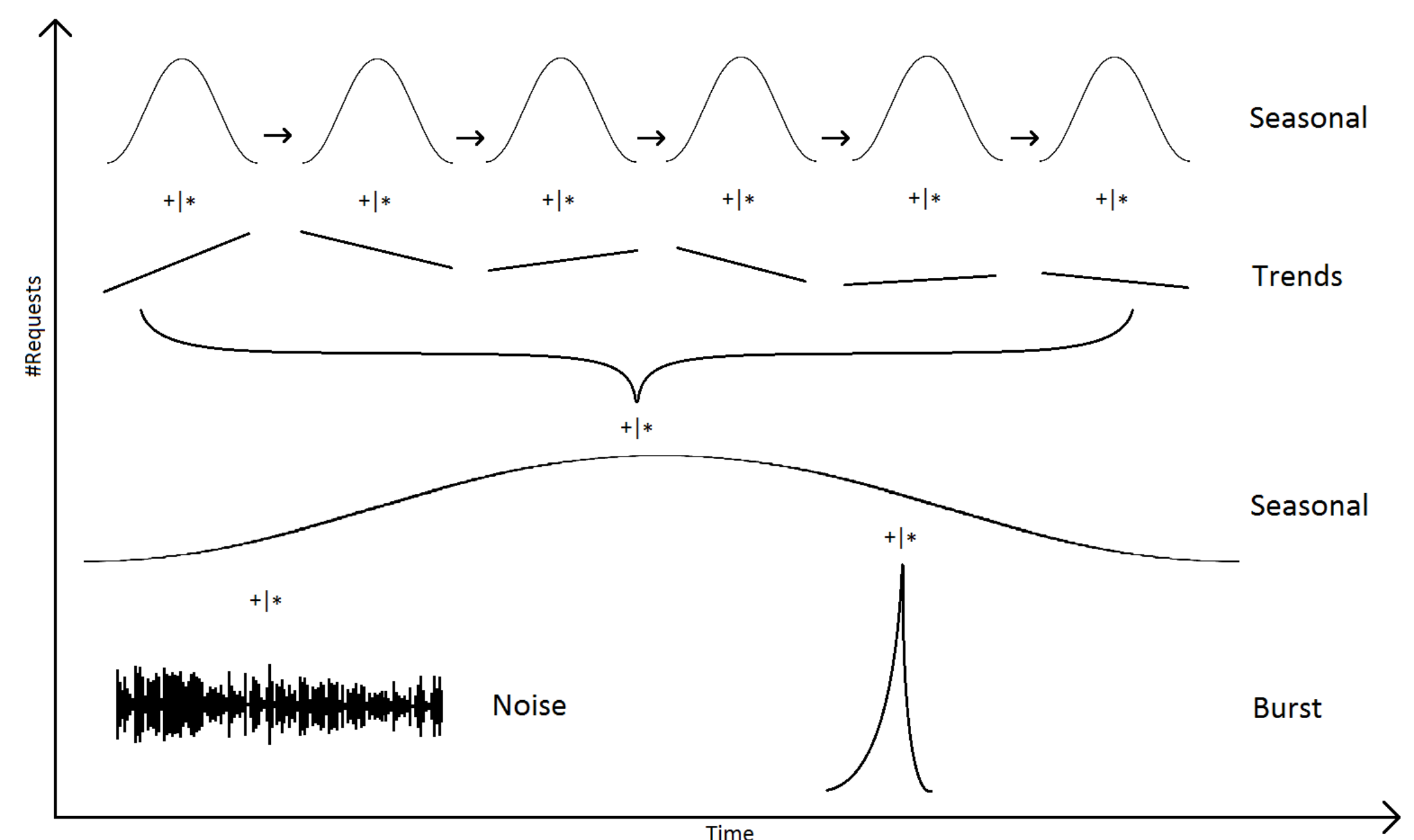


Extract Model Instances

- From existing traces
- Using one of multiple Extraction Methods

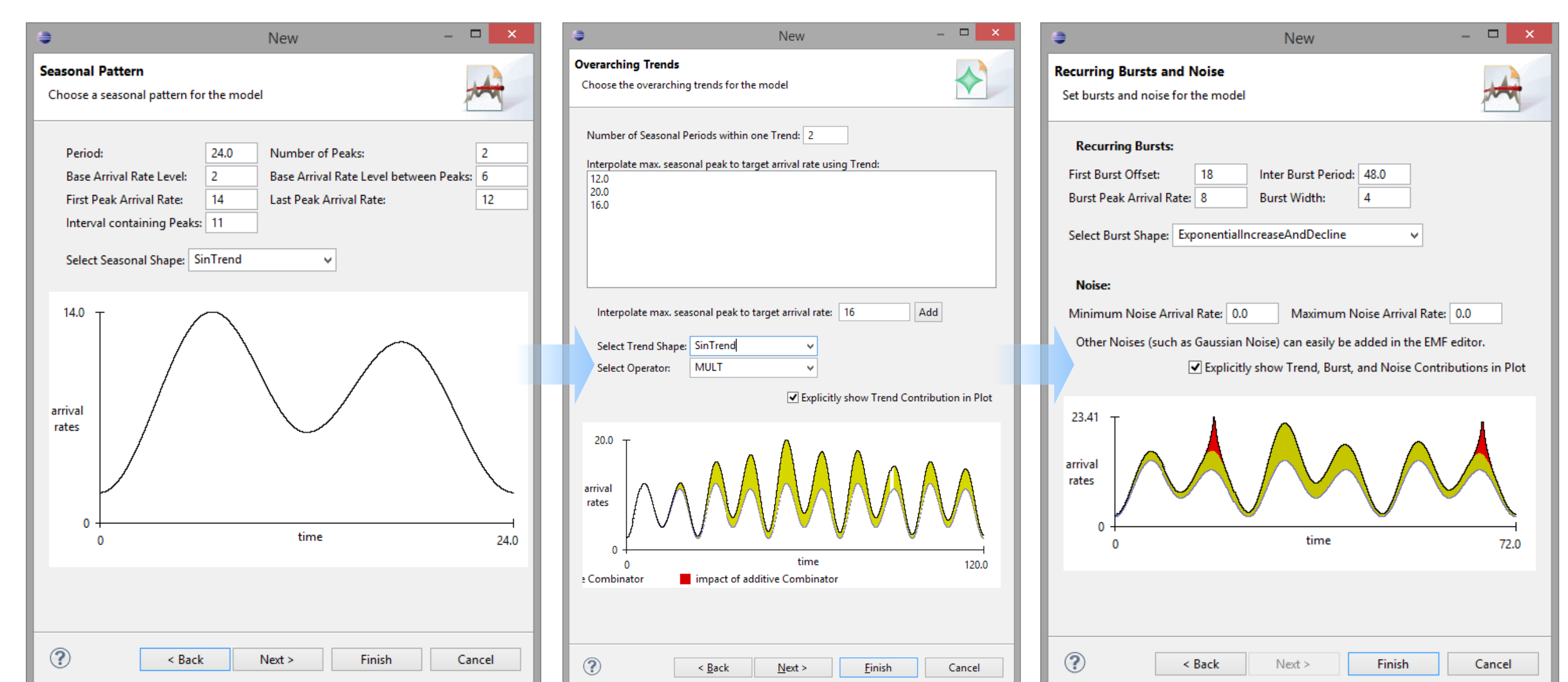


Model Load Intensity Profiles, including Seasonal Patterns, Trends, Bursts, Noise



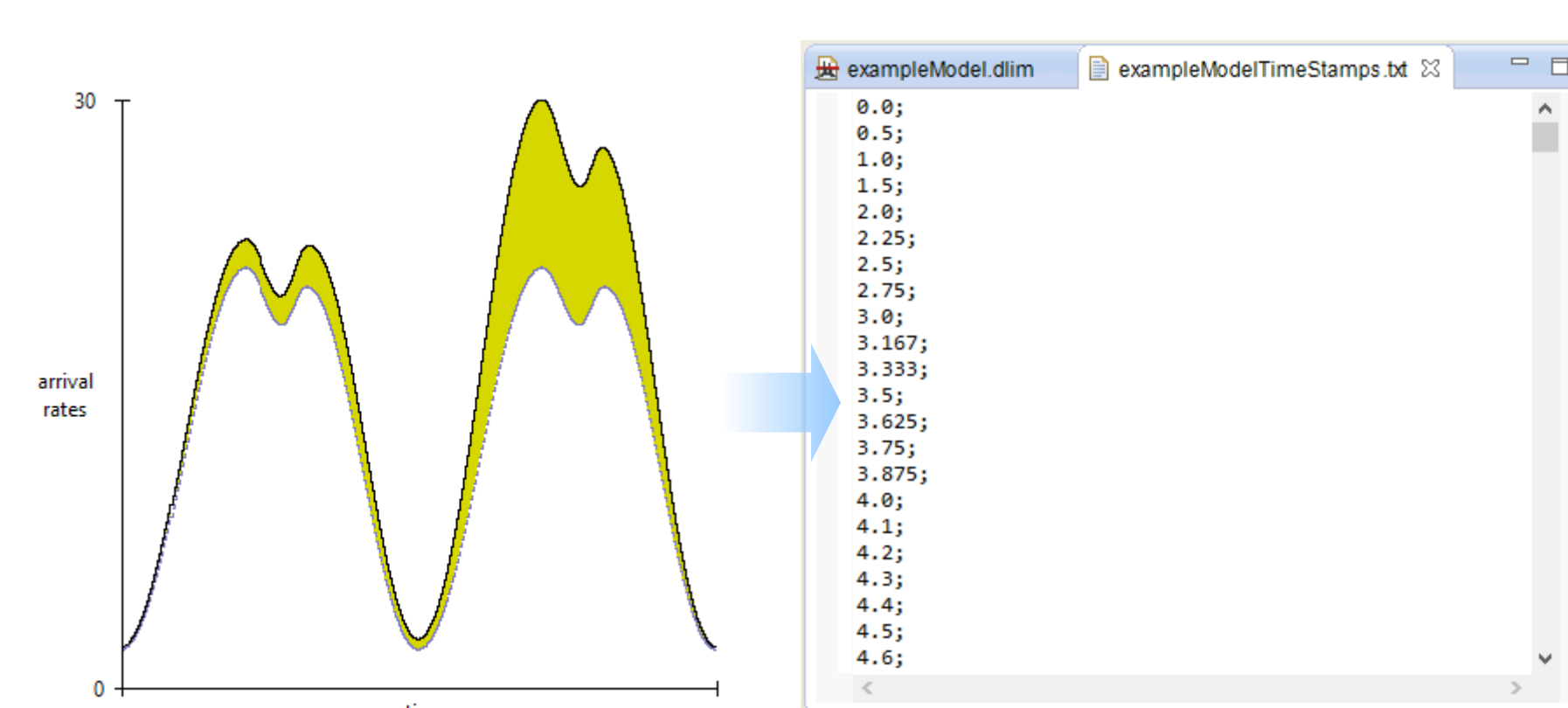
High-level Descartes Load Intensity Model

- For easy initial Model Creation using New Model Creation Wizard



Generate Request / User Arrival Time Stamps

- From Load Intensity Description
- Use for Open-Workload based Benchmarking
- Combine with JMeter for mixed Workloads



<http://descartes.tools/limbo>