

# **RETIT**

## Performance Modeling in Industrial Practice

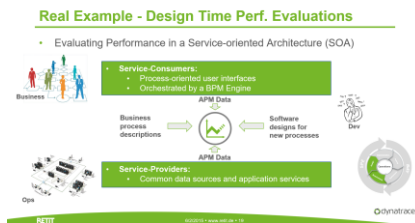
Andreas Brunnert



# Why?

- RETIT believes that model-based performance evaluations can improve the performance and resource efficiency of IT systems dramatically!
- Because models:

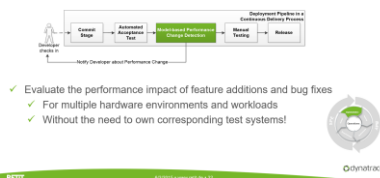
## ✓ Improve cross-team collaboration



...by integrating multiple data sources

## ✓ Increase performance awareness

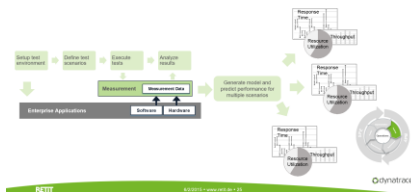
### Use Cases – Model-based Evaluations in CD



... through immediate feedback during development.

## ✓ Extend test coverage

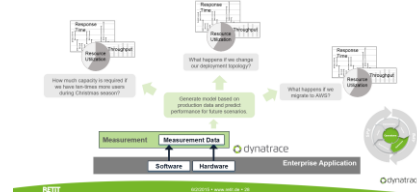
### Use Cases – Integrating Load Tests w/ Predictions



... by allowing you to test more workloads and hardware environments.

## ✓ Save cost

### Use Cases – Model-based Capacity Management



... by taking the guess-work out of capacity planning activities.

# What?

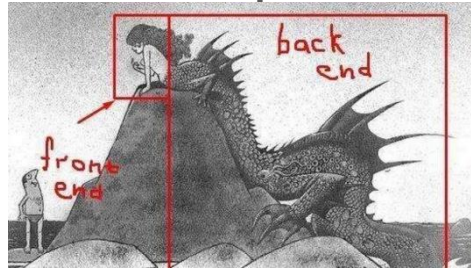
- RETIT provides solutions that aim to bring advantages of model-based performance evaluations to industrial practice
- This means:

- ✓ Automatic model construction



...because nobody wants to do that manually

- ✓ Hiding the complexity of model options



... because people need answers not a PhD topic ;-)

- ✓ Limiting the flexibility of predictions



... to focus on things that bring trustworthy results

- ✓ Using existing measurement data



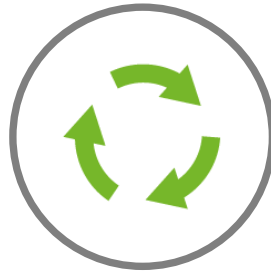
... otherwise people wouldn't be willing to try it.

# How?

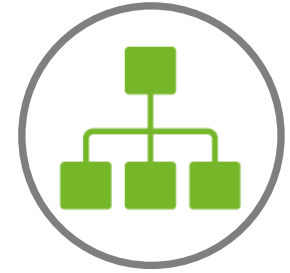
---



**RETIT Capacity  
Manager**



**RETIT Continuous  
Delivery**



**RETIT Application  
Performance  
Monitoring**

Thank You!

Andreas Brunnert  
brunnert@retit.de

**RETT**

*Resource Efficient Technologies & IT Systems*